

RESOLUTION NO. 03-40

**RESOLUTION CREATING RURAL SPECIAL IMPROVEMENT MAINTENANCE
DISTRICT TO BE KNOWN AS R.S.I.D. #688M
EAGLE BEND OF THE YELLOWSTONE SUBDIVISION**

WHEREAS, the Board of County Commissioners of Yellowstone County, Montana met in regular session and executed a Resolution of Intent to Create a Rural Special Improvement Maintenance District #688M for Eagle Bend of the Yellowstone Subdivision as described in Exhibit A and particularly shown in Exhibit B (map) and,

WHEREAS, the Clerk and recorder published the notice of the passage of Resolution of Intent to Create the District in the Billings Gazette on April 11th, and April 18th, 2003, and mailed a copy of the Notice to every person, firm or corporation owning property in the District; and,

WHEREAS, the board of County Commissioners finds, determines and declares that:

1. That the public interest of convenience requires the creation of a Rural Special Improvement Maintenance District as hereinafter described;
2. That the costs of providing maintenance shall be borne by owners of the property included within the boundaries of the Rural Special Improvement Maintenance District with all lots being assessed an equal amount on a per lot basis;
3. That the purpose of forming the District is to provide the maintenance and preservation of the roadway so repaired;
4. That the Commissioners have been presented with a valid Petition to create the proposed District;

NOW, THEREFORE, BE IT RESOLVED by the Board of County Commissioners of Yellowstone County as follows:

1. The Commissioners have acquired jurisdiction to create a Rural Special Maintenance district No. #688M to provide for the annual maintenance, operation and preservation of the roadway system. The maintenance costs are more particularly described in Exhibit C. The estimated costs shown do not preclude other eligible street maintenance expenditures.
2. All of the costs of the District shall be assessed equally on a per lot basis for all existing and future lots. The boundaries of this district are shown on the map attached as Exhibit B and described in Exhibit A.
3. The number of the Rural Special Maintenance District thereof shall be **No. 683M.**
4. All lots accessing their property from the improved streets will benefit from proposed R.S.I.D. and shall be assessed for road maintenance. All lots will be assessed an equal amount based upon the total cost of the maintenance.

5. The Commissioners desire that an Ad Hoc Committee be appointed to make recommendations to the Commissioners with regard to the need for assessments to be made for the maintenance and the amount of the assessments, and how the assessments should be spent. The Commissioners ask that the Petitioners submit a list of some individuals who are willing to serve on the Ad Hoc Committee.

PASSED AND ADOPTED by the Board of County Commissioners of Yellowstone County, Montana, this 22nd day of April, 2003.

BOARD OF COUNTY COMMISSIONERS
YELLOWSTONE COUNTY, MONTANA



Bill Kennedy, Chair



James E. Reno, Member



John Ostlund, Member

(SEAL)
ATTEST:



Tony Nave, Clerk and Recorder

**RESOLUTION OF INTENT TO CREATE
RSID 688M-EAGLE BEND OF THE YELLOWSTONE
EXHIBIT A: LEGAL DESCRIPTIONS**

Lots 1-15, Block 1; Lot 1, Block 2; Lots 1-4, Block 3; Lots 1-16, Block 4; Lots 1-21, Block 5; Lots 1-9, Block 6; Lots 1-17, Block 7; and Lots 1-19, Block 8 Eagle Bend of the Yellowstone.

**RESOLUTION OF INTENT TO CREATE
RSID 688M-EAGLE BEND OF THE YELLOWSTONE
EXHIBIT B: MAP**

**PLAT OF
EAGLE BEND OF THE YELLOWSTONE**

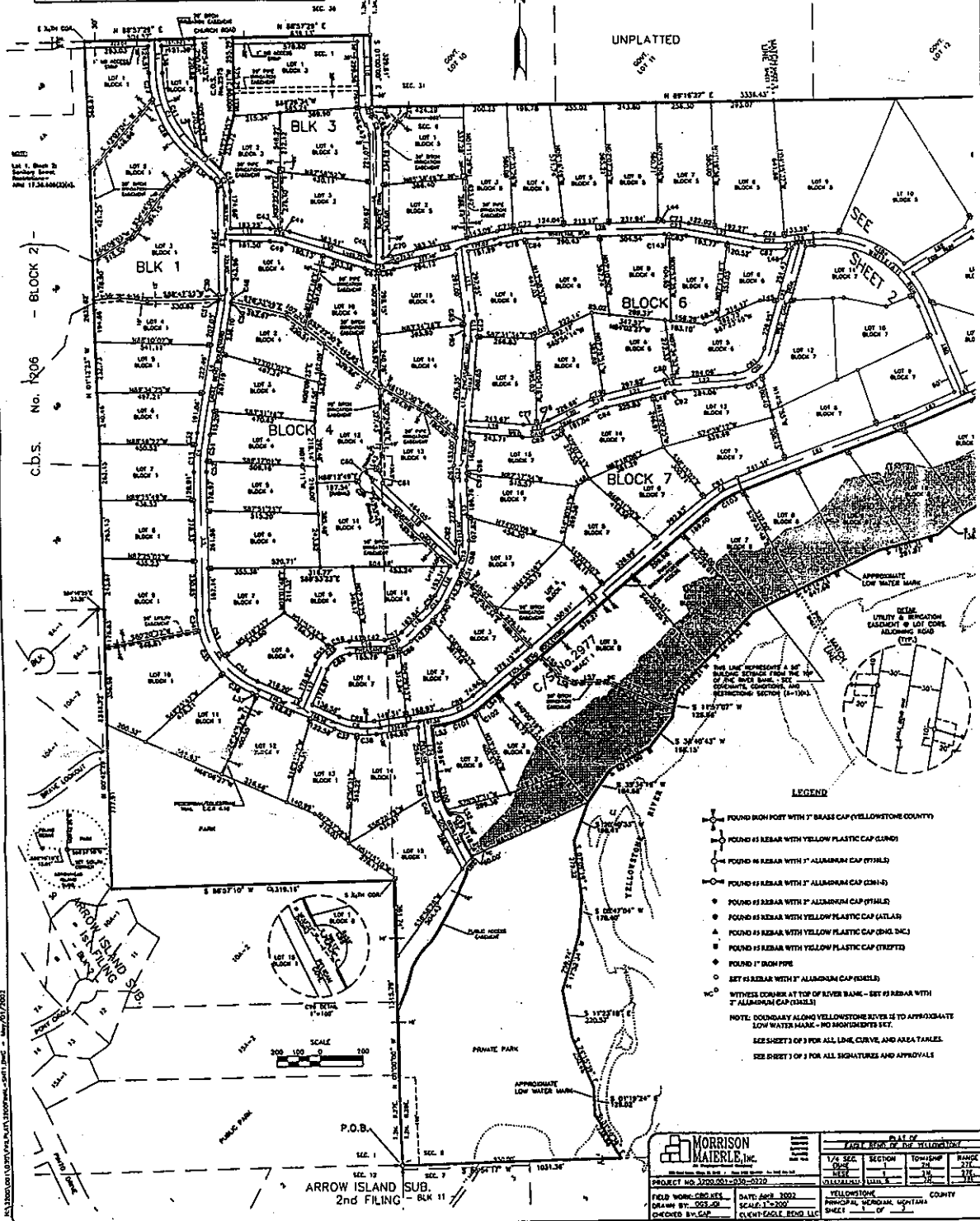
LOCATED IN SECTION 1, T.2N., R.27E., P.M.M., AND SECTION 6,
T.2N., R.28E., P.M.M., YELLOWSTONE COUNTY, MONTANA
APRIL, 2002



PROJECT AREA

BASIS OF BEARINGS

Bearings are given, derived from GPS observations with survey-grade receivers and referenced to the Montana Coordinate System, Single Zone, NAD83.



LEGEND

- FOUND IRON POST WITH 1" BRASS CAP (YELLOWSTONE COUNTY)
 - FOUND #5 REBAR WITH YELLOW PLASTIC CAP (LUND)
 - FOUND #6 REBAR WITH 1" ALUMINUM CAP (HYLES)
 - FOUND #5 REBAR WITH 1" ALUMINUM CAP (CIBEL)
 - FOUND #5 REBAR WITH 1" ALUMINUM CAP (HYLES)
 - FOUND #5 REBAR WITH YELLOW PLASTIC CAP (ATLAS)
 - △ FOUND #5 REBAR WITH YELLOW PLASTIC CAP (D&L D&C)
 - FOUND #5 REBAR WITH YELLOW PLASTIC CAP (TREET)
 - FOUND 1" IRON PIPE
 - SET #5 REBAR WITH 1" ALUMINUM CAP (HYLES)
 - WITNESS CORNER AT TOP OF RIVER BANK - SET #5 REBAR WITH 1" ALUMINUM CAP (CIBEL)
- NOTE: BOUNDARY ALONG YELLOWSTONE RIVER IS TO APPROXIMATE LOW WATER MARK - NO MONUMENTS SET.
SEE SHEET 2 OF 3 FOR ALL LINE, CURVE, AND AREA TABLES.
SEE SHEET 3 OF 3 FOR ALL SIGNATURES AND APPROVALS.

MORRISON MAIERLE, INC.
PLAT WORKS, CHARTERS, SURVEYING, ENGINEERING, ARCHITECTURE, ENVIRONMENTAL SCIENCE, LAND ACQUISITION, PROJECT MANAGEMENT, REAL ESTATE, AND CONSULTING SERVICES.
PROJECT NO. 2002-001-030-0000
FIELD WORK: C.R.G./J.S.
DRAWN BY: S.G.S./J.S.
CHECKED BY: C.G.E.

DATE: APR 2002
SCALE: 1"=200'

YELLOWSTONE COUNTY
PROVISIONAL, SHERMAN, MONTANA
SHEET 1 OF 3

EAGLE BEND OF THE YELLOWSTONE			
1/4 SEC.	SECTION	TOWNSHIP	RANGE
1	11	2N	27E
1	11	2N	27E
1	11	2N	27E

ARROW ISLAND SUB.
2nd FILING - BLK 11

**RESOLUTION OF INTENT TO CREATE
RSID 688M-EAGLE BEND OF THE YELLOWSTONE
EXHIBIT C**

ESTIMATED ANNUAL MAINTENANCE COST

FALL MAINTENANCE:

ACTIVITY/IMPROVEMENT	ESTIMATED COST
ROAD GRADING	\$ 1,620.00
	\$

WINTER MAINTENANCE:

ACTIVITY/IMPROVEMENT	ESTIMATED COST
	\$
	\$

SPRING MAINTENANCE:

ACTIVITY/IMPROVEMENT	ESTIMATED COST
ROAD GRADING	\$ 1,620.00
	\$

SUMMER MAINTENANCE:

ACTIVITY/IMPROVEMENT	ESTIMATED COST
	\$
	\$

TOTAL ESTIMATED ANNUAL MAINTENANCE COST: \$ 3,240.00